

Making Sustainable Procurement at Waverley Second Nature

Ale Torres – Sustainability Engagement Officer, Waverley Council

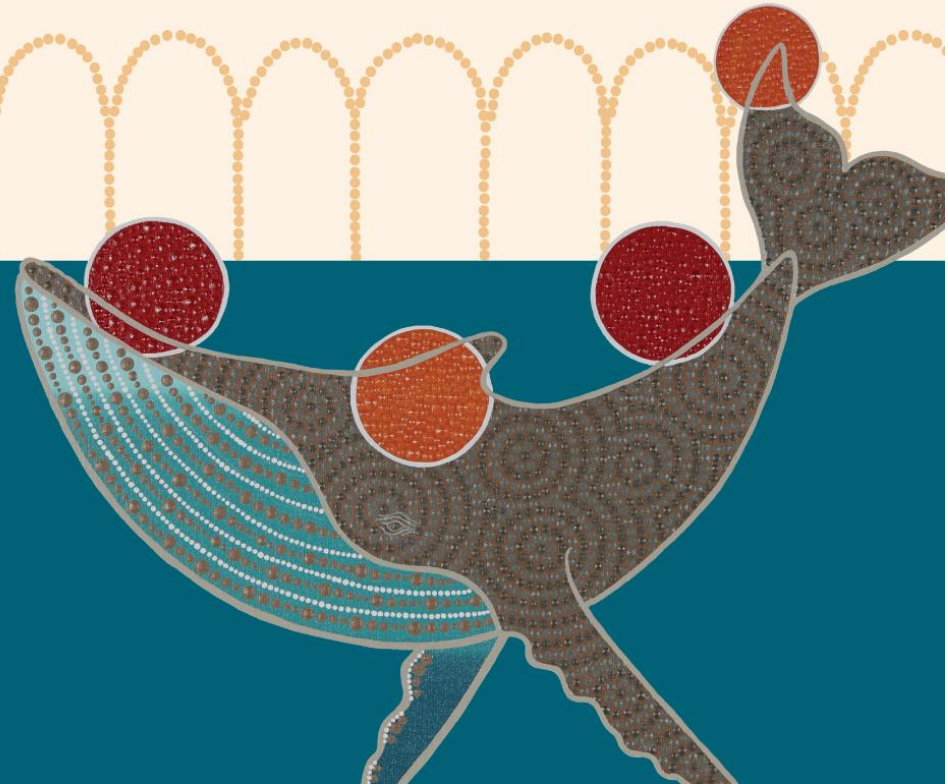


Acknowledgement of Country

Waverley Council would like to acknowledge the Bidjigal and Gadigal people, who traditionally occupied the Sydney Coast. We would also like to acknowledge Aboriginal Elders both past and present.



WAVERLEY
COUNCIL





Before



How



Challenges



Key learnings



Questions

START



Goal: By Dec 2021 (and ongoing) Sustainability is at the heart of our organisation and is systemic across our operations, processes, policies, systems and culture





Procurement



Human Resources



L&D



Leadership &
Communications



Events



Projects & Facilities



Gaps analysis

Best Practice
Research

Collaboration
&
Engagement



PROCUREMENT IS KEY!

Why Sustainable Procurement?

- **5 – 20%** revenue uplift
- **9 – 16%** Supply Chain Cost reduction
- 15 to 30% brand value increase
- 13-22% Carbon Footprint reduction
- Improved local welfare and Labour standards
- Risk reduction: moral, ethical, legal
- **90%** improved brand reputation
- **70%** stronger supplier relationships
- **30%** delivered cost savings
- **88%** better risks mitigation
- Lead the way/global trends

Source: Ecovadis SP Leading Tool and World Economic Forum Report



We aspire to lead by example and ensure environmental sustainability is systemic and embedded across Council's day-to-day business, services and operations.



-
- 1 Refining our procurement processes to positively influence the supply chain;
-
- 2 Ensuring our projects are designed and delivered to high sustainability standards, and
-



Sustainable procurement – ISO 20400

‘...has the most positive environmental, social & economic impacts possible over the entire life cycle...’



“Everyone thinks of changing the world, but no one thinks of changing himself.” — **Leo Tolstoy**

Identifying needs

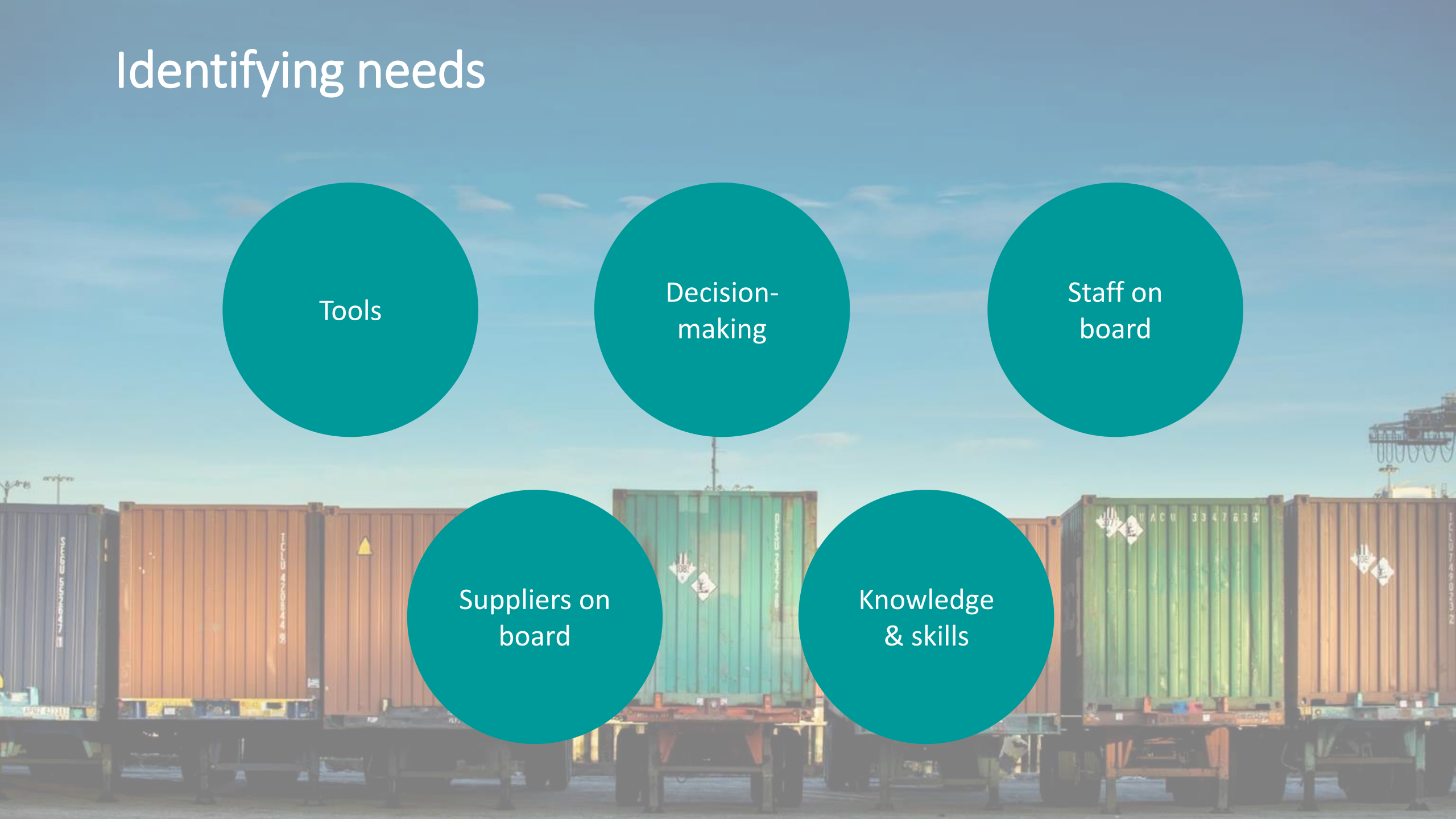
Tools

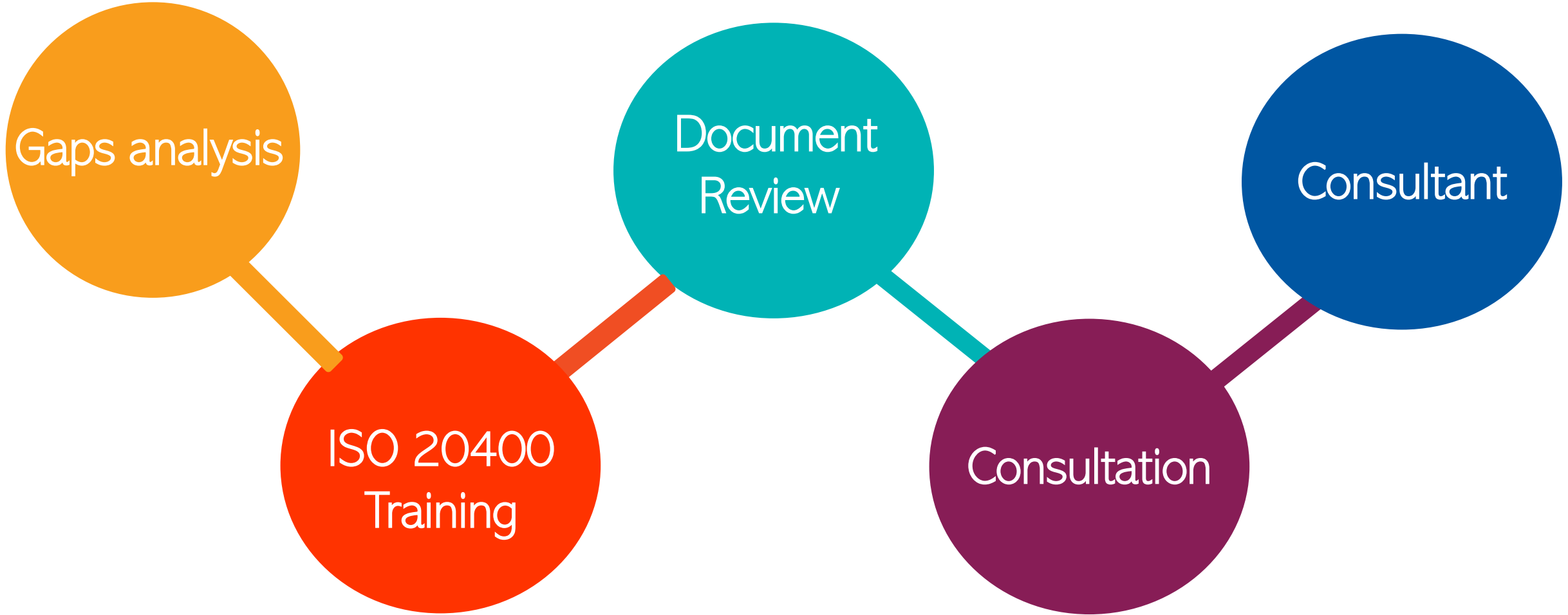
Decision-
making

Staff on
board

Suppliers on
board

Knowledge
& skills







Strategic

Tailored
tools

Bring Staff
on board

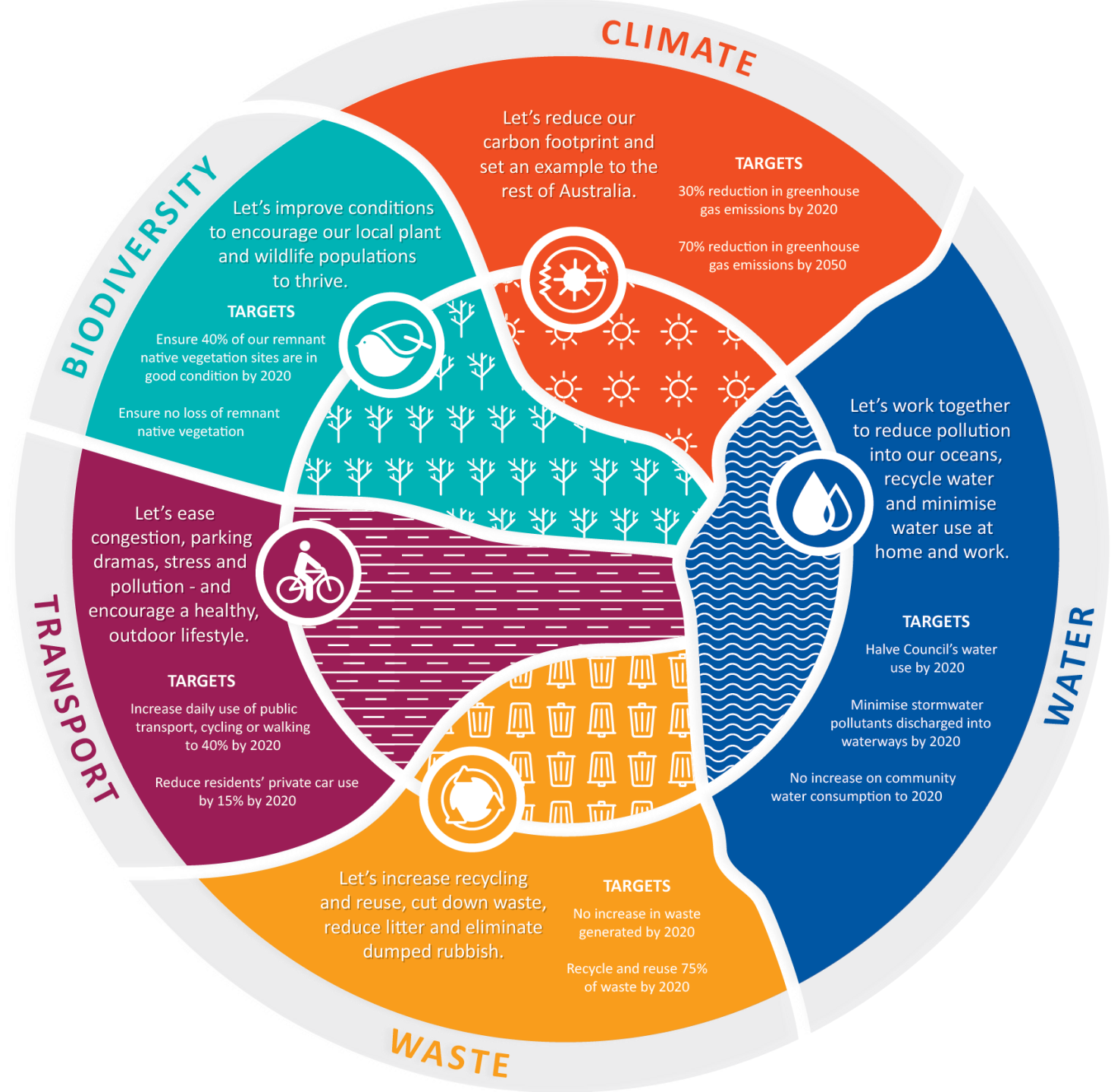
Weight

Strategy Alignment



Environmental

- Waste avoidance & reduction
- Reducing GHG
- Reducing water use



Social

- Reconciliation Action Plan
- Social Inclusion & Diversity
- Opportunities



Development Goals

- Modern Slavery
- Circular economy
- Local
- Embedding into policies i.e. events

12 RESPONSIBLE CONSUMPTION AND PRODUCTION



Prioritising



- ✓ Support from LGP & consultant
- ✓ Spend analysis/Id priorities
- ✓ SP Heatmap



Sustainability Heatmap Assessment – Risks & Opportunities

		Threat and opportunity scoring							
Portfolio	Category	Pollution & Biodiversity	Resilience to Weather and Climate	Labour and Human Rights	Workplace & Occupants Health, Safety & Wellbeing	Fair Operating Practices	Energy, Carbon, Water, Waste and Materials	Diversity & Inclusion	Community Involvement
		Business Impact	Business Impact	Business Impact	Business Impact	Business Impact	Business Impact	Business Impact	Business Impact
Maintenance - Cleaning	Cleaning services & associated products.	6	2	12	9		-11	-15	-10
Construction Major	Building construction & major projects	7	13	11	10	6	-7	-4	-8
Construction Minor	Building construction & minor projects	4	4	7	7	2	-5	-1	-2
Catering	Food services/catering	1	1	4	1	1	-9	-7	-5
Info Tech & Telecomms hardware	Info Tech & Telecomms hardware	7	1	7	1	1	-12	-8	-1
Supplies	Office supplies	7	1	7	1	1	-5	-8	-1
Waste Management	Procurement of residential mobile garbage bins, litter management infrastructure (ie solar bins)	3	1	7	8	6	-11	-11	-1
Maintenance - Outdoor parks & grounds	Parks, bush regeneration, Gardens, Sports Grounds maintenance and chemical products	8	13	8	3	1	-2	-7	-4
Maintenance - Civil works	Drainage, roads, concreting, emulsion, asphalt material, kurb & gutter, fencing, landscaping, utility restorations, concrete roads, car park exit, desilting, asbestos, removing of sediments (pits, sediment basins, GPT, Stormwater recycling water systems)	4	8	8	6	6	-7	-2	-2

Sustainability Heatmap Benchmark – Construction

Category Information			Business threat and opportunity scoring							
Industry	Portfolio	Category	Pollution & Biodiversity Business Impact	Resilience to Weather and Climate Business Impact	Labour and Human Rights Business Impact	Workplace & Occupants Health, Safety & Wellbeing Business Impact	Fair Operating Practices Business Impact	Energy, Carbon, Water, Waste and Materials Business Impact	Diversity & Inclusion Business Impact	Community Involvement Business Impact
Tourism	Property - Construction & Consultancy	Construction services	9	10	10	Not Scored	Not Scored	-15	-12	Not scored
Tourism	Construction	Construction services	6	6	10	5	Not Scored	-9	-11	Included in D& Inclusion
Utilities	Construction	Construction services	6	10	5	3	Not Scored	-10	-4	-4
Construction	Construction Major & Minor	Construction Major & Minor	1	14	13	Not Scored	Not Scored	-16	-14	-9
		Average	6	10	10	4	#DIV/0!	-13	-10	-7
(Waverley Team)	Construction	Major construction & engineering projects	7	8	14	13	6	-7	-2	-8
(Waverley Team scores)	Construction	Minor construction & engineering projects	4	4	14	7	2	-5	-1	-2
		Reconsider scoring	No	Yes - Up	Yes - Down	Yes - Down	No	No	Yes - Up	No

Governance and Tailored Tools



Info Tech & Communications hardware criteria

Sustainability criteria/KPIs	Suggested actions/initiatives (200 words maximum for each criterion)
1. Energy efficient and socially responsible products	Please describe the initiatives your organisation has in place to increase the energy efficiency and social sustainability of its products via the entire supply chain. Please provide copies of relevant supporting documentation if available i.e. EPEAT, Energy Star, TCO certified, etc...).
2 Waste reduction and resource recovery throughout product lifecycle	Please specify the initiatives you have in place to reduce waste to landfill. Please provide information relevant to your product i.e. polystyrene packaging avoidance, buy-back programs, product durability, where and how is the product recycled and other relevant information. Please describe how you would report on this to Council.
3. Promote workforce diversity and inclusion	Please specify how you support diversity and inclusion in the workforce i.e do you partner with disability employment or aboriginal employment service providers if so, which ones? Do you have strategies targeting diversity and inclusion, if so, what are they? How do you actively encourage employment for people from an Aboriginal and/or Torres Strait Island background, people from migrant or refugee backgrounds and people with disabilities? Do you provide apprenticeship opportunities for these communities if so, how many etc...

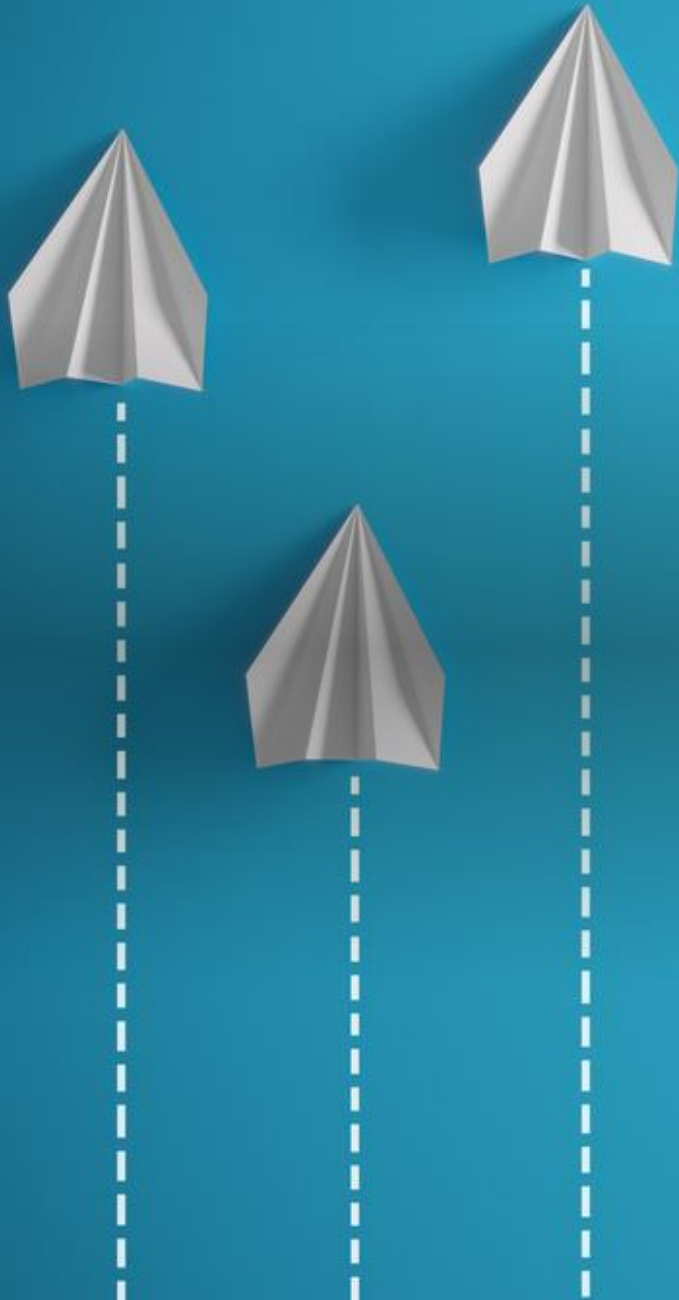


Procurement Policy

Responsible Officer	Vince Tari – Executive Manager, Procurement
Date adopted by Executive Leadership Team	TBC
Date adopted by Council	TBC
Version	V1
Review date	November 2020
TRIM reference	D20 / 43109



Decision Making



Mandatory
10 to 30%
evaluation

Evaluation
sheet

KPIs for
contracts

Forward
Procurement
Plan



Collaboration
—&—
Support



7 Teams

Consultant

Common
Vision

Co-design

Capacity
Building



WHERE THE
SUCCESS
HAPPENS

Challenges

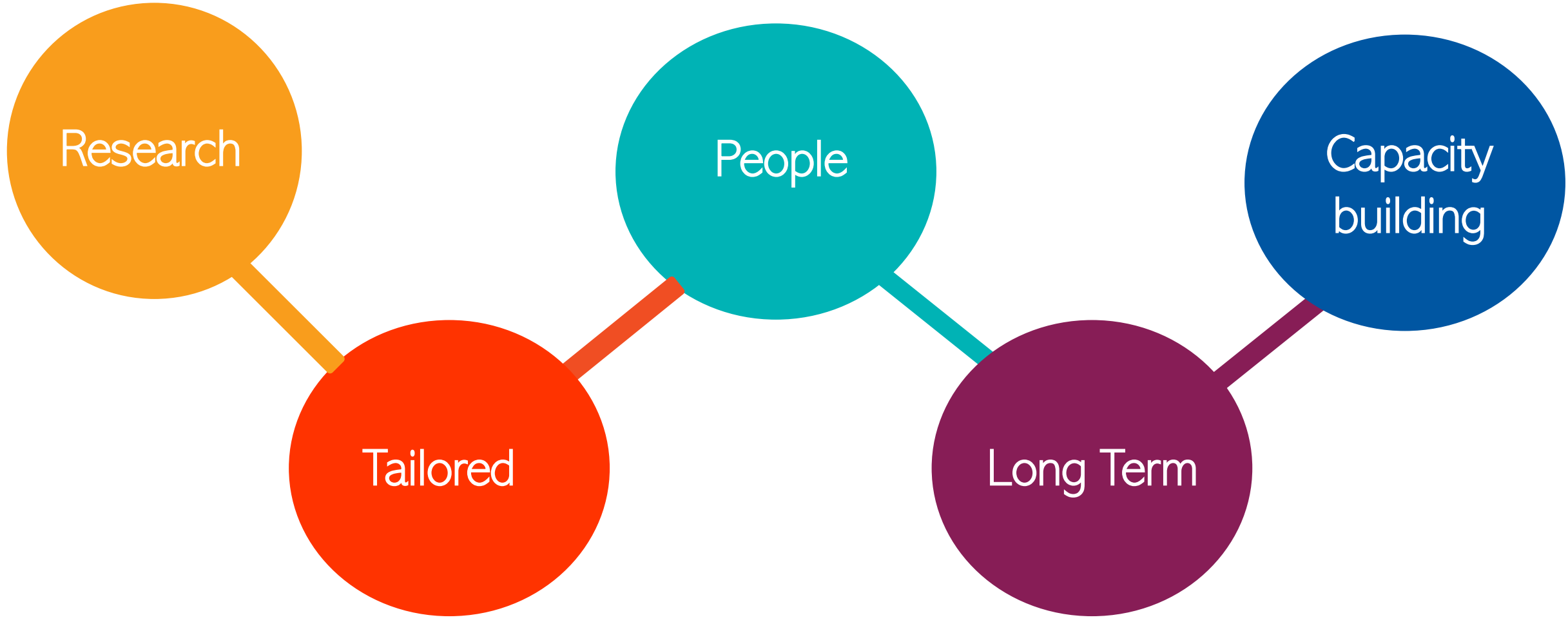
- What's out there!!!????
- Misconceptions
- Time
- Staff turnover
- 1 size doesn't fit all





Key elements





Research

People

Capacity
building

Tailored

Long Term

What's Next?

- Keep on supporting staff
- Working with current and future suppliers
- Working with panels LGA, SSROC

second
nature



Thank you

Email: Alejandra.torres@Waverley.nsw.gov.au

Phone: 9083 8045

Questions?

